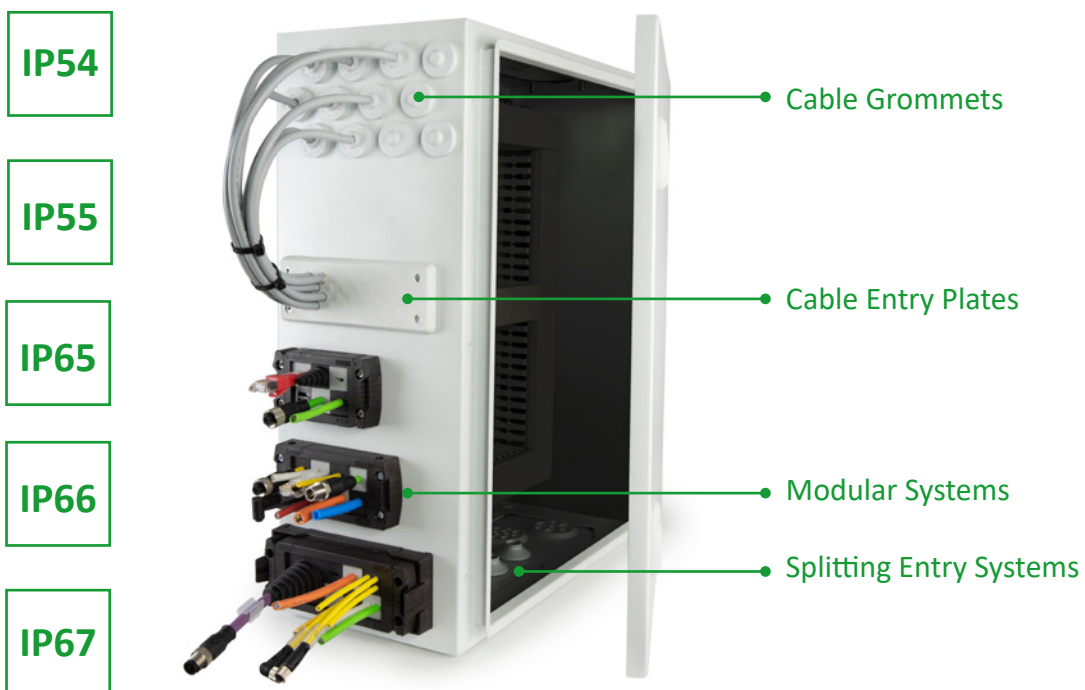


Cable Entry Solutions from Trelleborg



New in the Portfolio.



Authorised Distributor.

- Trelleborg cable entry systems are used wherever protection against water, dust and moisture is needed. The products are used in panel construction segments, transportation technology, renewable energy generation, mechanical engineering, even in the food & beverages industry and in telecommunication infrastructure.
- High tightness and almost tool-free use of the cable entry systems
- Compliance with the protection classes IP54 to IP67
- Use in rough environmental conditions possible



Our Portfolio - Proven Quality.

Cable Entry Systems from Trelleborg

Cable Grommets

(Non-splitting, fix / peelable diameter)



Specifications:

List of Materials:	TPE, EPDM, Silicone
Temperatures (°C):	-40 to +100 °C, -40 to +120 °C, -40 to +200 °C
Flame class:	UL94-V0, self-extinguishing
Properties:	Halogen free, Silicone free
Installation range (∅):	3 mm to 69 mm
Mounting type:	Snap-in
Classes:	IP54, IP65, IP67

Cable Gland Plates

(Non-splitting, fix diameters)

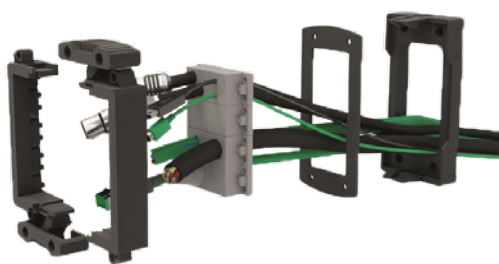


Specifications:

List of Materials:	TPE (frame: polyamid or metal)
Temperatures (°C):	-40 to +100 °C
Flame class:	UL94-V0, self-extinguishing
Properties:	Halogen free
Installation range (∅):	3 mm to 60 mm
Mounting type:	Screw type mounting
Classes:	IP55, IP65, IP67

Modular Systems

(Modular, fix diameters)



Specifications:

List of Materials:	Polyamid, SBES, NBR
Temperatures (°C):	-40 to +120 °C
Flame class:	UL94-V0, self-extinguishing
Properties:	Halogen free, Silicone free
Installation range (∅):	1 mm to 33 mm
Mounting type:	Screw type mounting, Snap-in
Classes:	up to IP65

Splitting Entry Systems

(Modular, peelable diameters)



Specifications:

List of Materials:	Polymer (plastic reinforced)
Temperatures (°C):	-40 to +90 °C
Flame class:	UL94-V0, self-extinguishing
Properties:	Halogen free
Installation range (∅):	3 mm to 67 mm
Mounting type:	Screw type mounting
Classes:	IP55

www.boersig.com

